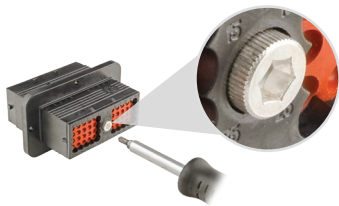


AEC & DR Series

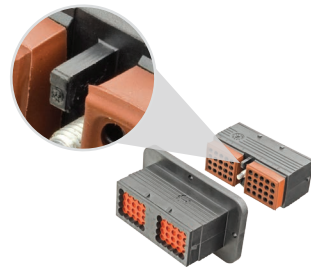
DRC Series

- Environmentally sealed – IP68, IP6K9K when installed to manufacturer’s specifications.
- Accepts size 12, 16 and 20 contacts.
- Several mounting options are available including In-line, Flange, Standard and Moulded in Contact Receptacles.
- Optional accessories include Backshells, Insulators and Mounting Gaskets.
- Mates using key fastened jackscrew.
- Keyed versions for miss-mate prevention.

Housing :	Thermoplastic
Seal :	Silicone Rubber
Insert Retainer :	Thermoplastic
Jackscrew :	Steel
Receptacle Threaded Inserts :	Steel/Brass
Vibration :	20G rms 10 – 2000Hz
Approvals :	20mm Flame Test per Standard UL-94
Ingress Protection :	IP68, IP6K9K
Operating Temperature :	-55°C to 125°C

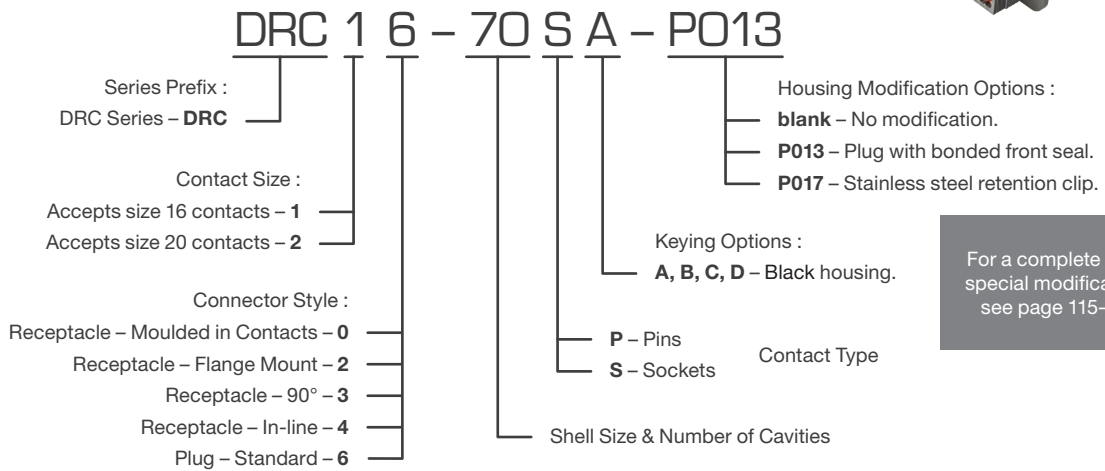


Mates using key fastened jackscrew



Key provides positive alignment & correct mating

Part Numbering System



For a complete list of special modifications see page 115-119

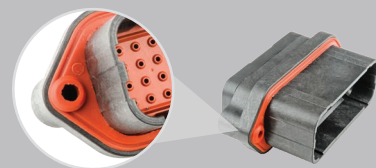
Popular DRC Series Special Modifications



P013
Plug with bonded front seal, silicone adhesive.



P017
Stainless steel retention clip for jackscrew.



DRC22-40PA
The DRC22-40PA is an inside mount flange, as opposed to the usual outside mount flange eg DRC12-40PA.



AEC & DR Series

Connector Styles

Receptacle
Moulded in Contacts

DRC×0-XX



DRC10-40P

Receptacle
Flange Mount

DRC×2-XX



DRC12-24PA

Receptacle
90°

DRC×3-XX



DRC12-24PA

Receptacle
In-line

DRC×4-XX



DRC14-40PA

Plug
Standard Plug

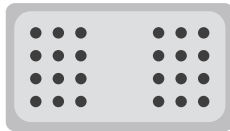
DRC×6-XX



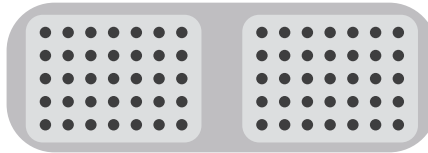
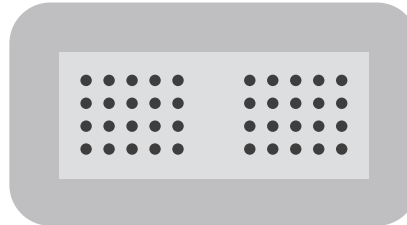
DRC16-70SA

Shell Size & Number of Cavities

DRC**1x-24**XX
24 x size 16

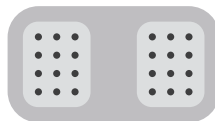


DRC**1x-40**XX
40 x size 16

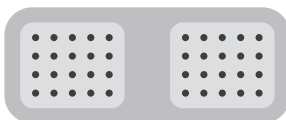
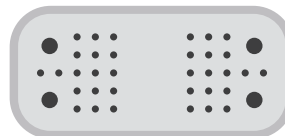


DRC**1x-70**XX
70 x size 16

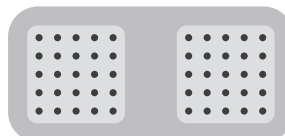
DRC**2x-24**XX
24 x size 20



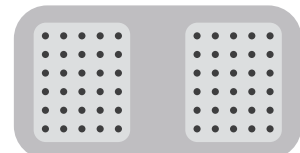
DRC**26-38**XX
34 x size 20, 4 x size 12
(Plug for DRC20-76PXXXX)



DRC**2x-40**XX
40 x size 20



DRC**2x-50**XX
50 x size 20



DRC**2x-60**XX
60 x size 20

For complete details on contacts & further options see page 98

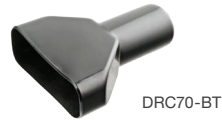
AEC & DR Series



DRC24-BT



DRC40-BT



DRC70-BT



DRCB24



DRCB40



DRCB70



DRC24-GKT



DRC40-GKT



DRC70-GKT



0515-031-7005



0528-001-5005



0528-002-6005



0528-007-6005

DRC Series – Accessories

Part No.	Description	Shell Size	Material
DRC24-BT	Insulator – Black – 130mm	24	Plastisol
DRCB24	Insulator – Black – 190mm	24	PVC
DRC40-BT	Insulator – Black – 130mm	40	Plastisol
DRCB40	Insulator – Black – 215mm	40	PVC
DRC70-BT	Insulator – Black – 130mm	70	Plastisol
DRCB70	Insulator – Black – 215mm	70	PVC
DRC24-GKT	Mounting Gasket	24	Neoprene
DRC40-GKT	Mounting Gasket	40	Neoprene
DRC70-GKT	Mounting Gasket	70	Neoprene
0515-031-7005	Wire router	70	PA66
0528-001-5005	Backshell – Plug, double outlet, NW22 conduit, 90°	50	Thermoplastic
0528-002-6005	Backshell – Plug, double outlet, NW22 conduit, 90°	60	Thermoplastic
0528-007-6005 	Backshell – Plug, single outlet, NW26 conduit, 90° to the side	60	Thermoplastic

